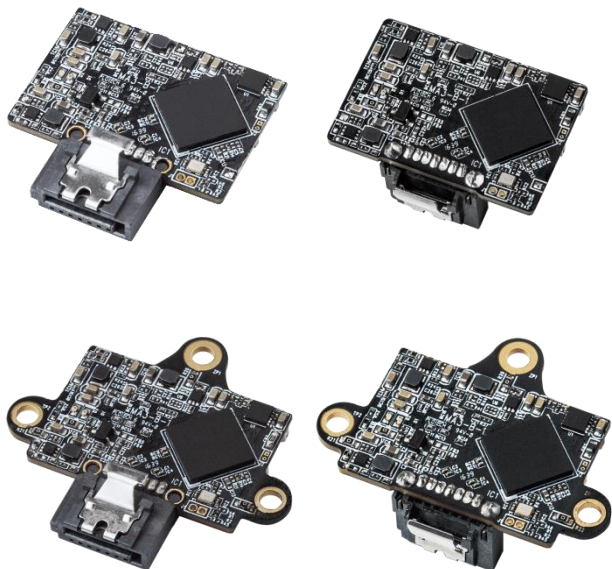


MEMXPRO SATA Module EB31 Series

SLC like, 20K+ P/E cycles



Features

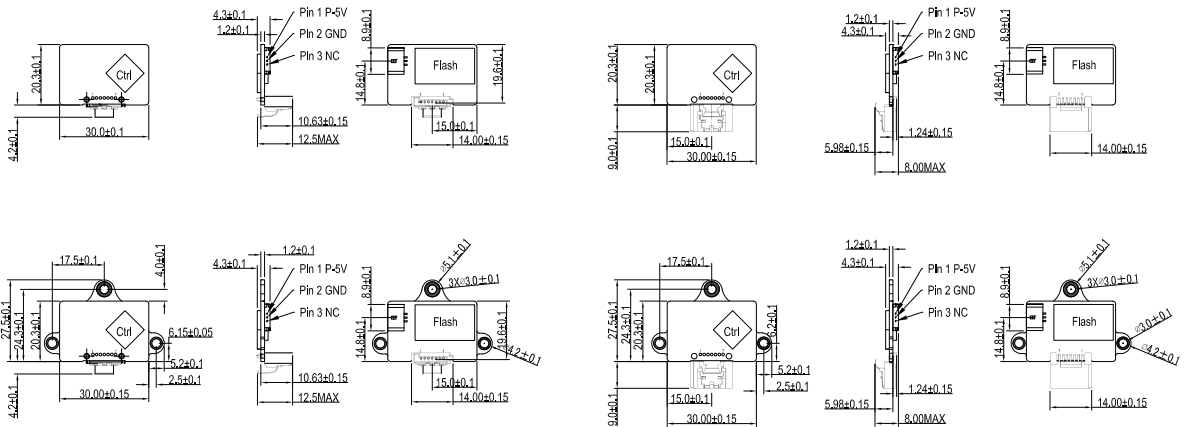
- 7-pin SATA connector design
- StrongMLC, DRAM-less, up to 64GB capacity
- Small form factor with 3 or without screw holes
- Commercial/extended/wide temp. solutions
- Built-in ECC and OCP/OVP
- NCQ/TRIM/SMART support
- mSMART storage device monitoring

Specification

| Product Model | SATA Module EB31 | | | |
|-------------------------------|-----------------------------------|---------------------|-------------------|---------------------|
| Interface | SATA III | | | |
| Form Factor | Vertical, 3 holes | Horizontal, 3 holes | Vertical, no hole | Horizontal, no hole |
| Flash Type | StrongMLC | | | |
| Max. Channel | 2 | | | |
| Density | 8GB~32GB | | | |
| Sequential R/W (MB/sec, max.) | 354/154 | | | |
| Operating Temperature | 0°C~+70°C/-25°C~+85°C/-40°C~+85°C | | | |
| Max. Power Consumption | 1.25W (5Vx250mA) | | | |
| Dimension (L x W x H/mm) | 36.5x40.4x8.0 | 36.5x40.4x12.5 | 29.3x30.0x8.0 | 24.5x30.0x12.5 |
| Operating Voltage | 5V±5% | | | |
| Storage Temperature | -55°C~+95°C | | | |
| External DRAM Buffer | N/A | | | |
| Thermal Sensor | ✓ | | | |
| DEVSLP Mode | N/A | | | |
| ATA Security | ✓ | | | |
| S.M.A.R.T. | ✓ | | | |
| TRIM | ✓ | | | |
| Vibration | 20G (7~2KHz) | | | |
| Shock Resistance | 1500G@0.5ms | | | |
| MTBF | >3 million hours | | | |

Dimensions

Unit: mm



Ordering Information

SATA Module EB31 (Vertical, 3 holes)

| Capacity | Commercial (0°C–70°C) | Extended (-25°C–85°C) | Industrial (-40°C~+85°C) |
|----------|-----------------------|-----------------------|--------------------------|
| 8GB | FEDV3-08GTBS4X2C1 | FEDV3-08GTBS4X2E1 | FEDV3-08GTBS4X2W1 |
| 16GB | FEDV3-16GTBS4X2C1 | FEDV3-16GTBS4X2E1 | FEDV3-16GTBS4X2W1 |
| 32GB | FEDV3-32GTBS4X2C1 | FEDV3-32GTBS4X2E1 | FEDV3-32GTBS4X2W1 |

SATA Module EB31 (Horizontal, 3 holes)

| Capacity | Commercial (0°C–70°C) | Extended (-25°C–85°C) | Industrial (-40°C~+85°C) |
|----------|-----------------------|-----------------------|--------------------------|
| 8GB | FEDH3-08GTBS4X2C1 | FEDH3-08GTBS4X2E1 | FEDH3-08GTBS4X2W1 |
| 16GB | FEDH3-16GTBS4X2C1 | FEDH3-16GTBS4X2E1 | FEDH3-16GTBS4X2W1 |
| 32GB | FEDH3-32GTBS4X2C1 | FEDH3-32GTBS4X2E1 | FEDH3-32GTBS4X2W1 |

SATA Module EB31 (Vertical, no hole)

| Capacity | Commercial (0°C–70°C) | Extended (-25°C–85°C) | Industrial (-40°C~+85°C) |
|----------|-----------------------|-----------------------|--------------------------|
| 8GB | FEDV2-08GTBS4X2C1 | FEDV2-08GTBS4X2E1 | FEDV2-08GTBS4X2W1 |
| 16GB | FEDV2-16GTBS4X2C1 | FEDV2-16GTBS4X2E1 | FEDV2-16GTBS4X2W1 |
| 32GB | FEDV2-32GTBS4X2C1 | FEDV2-32GTBS4X2E1 | FEDV2-32GTBS4X2W1 |

SATA Module EB31 (Horizontal, no hole)

| Capacity | Commercial (0°C–70°C) | Extended (-25°C–85°C) | Industrial (-40°C~+85°C) |
|----------|-----------------------|-----------------------|--------------------------|
| 8GB | FEDH2-08GMBS4X2C1 | FEDH2-08GMBS4X2E1 | FEDH2-08GMBS4X2W1 |
| 16GB | FEDH2-16GTBS4X2C1 | FEDH2-16GTBS4X2E1 | FEDH2-16GTBS4X2W1 |
| 32GB | FEDH2-32GTBS4X2C1 | FEDH2-32GTBS4X2E1 | FEDH2-32GTBS4X2W1 |